

## Licence Information



<b>Environment Protection Licence (EPL) Number</b>	13218
<b>License Holder</b>	MACKA'S SAND PTY LTD
<b>Licensee Address</b>	<p>Licensee:  Macka's Sand Pty Ltd  2684 Nelson Bay Rd  Salt Ash NSW 2318</p> <p>Premises:  Macka's Sand Extraction and Processing Facility  Off Nelson Bay Road  Salt Ash NSW 2318</p>
<b>Link to the full licence on the EPA website</b>	<a href="https://apps.epa.nsw.gov.au/prpoeoapp/Detail.aspx?instid=13218&amp;id=13218&amp;option=licence&amp;searchrange=licence&amp;range=POEO%20licence&amp;prp=no&amp;status=Issued">https://apps.epa.nsw.gov.au/prpoeoapp/Detail.aspx?instid=13218&amp;id=13218&amp;option=licence&amp;searchrange=licence&amp;range=POEO%20licence&amp;prp=no&amp;status=Issued</a>
Anniversary Date:	30-Jun
Information Obtained:	13-Jul-20
Date of Publication:	15-Jul-20

1646 - Macka's Sand - EPL 13218

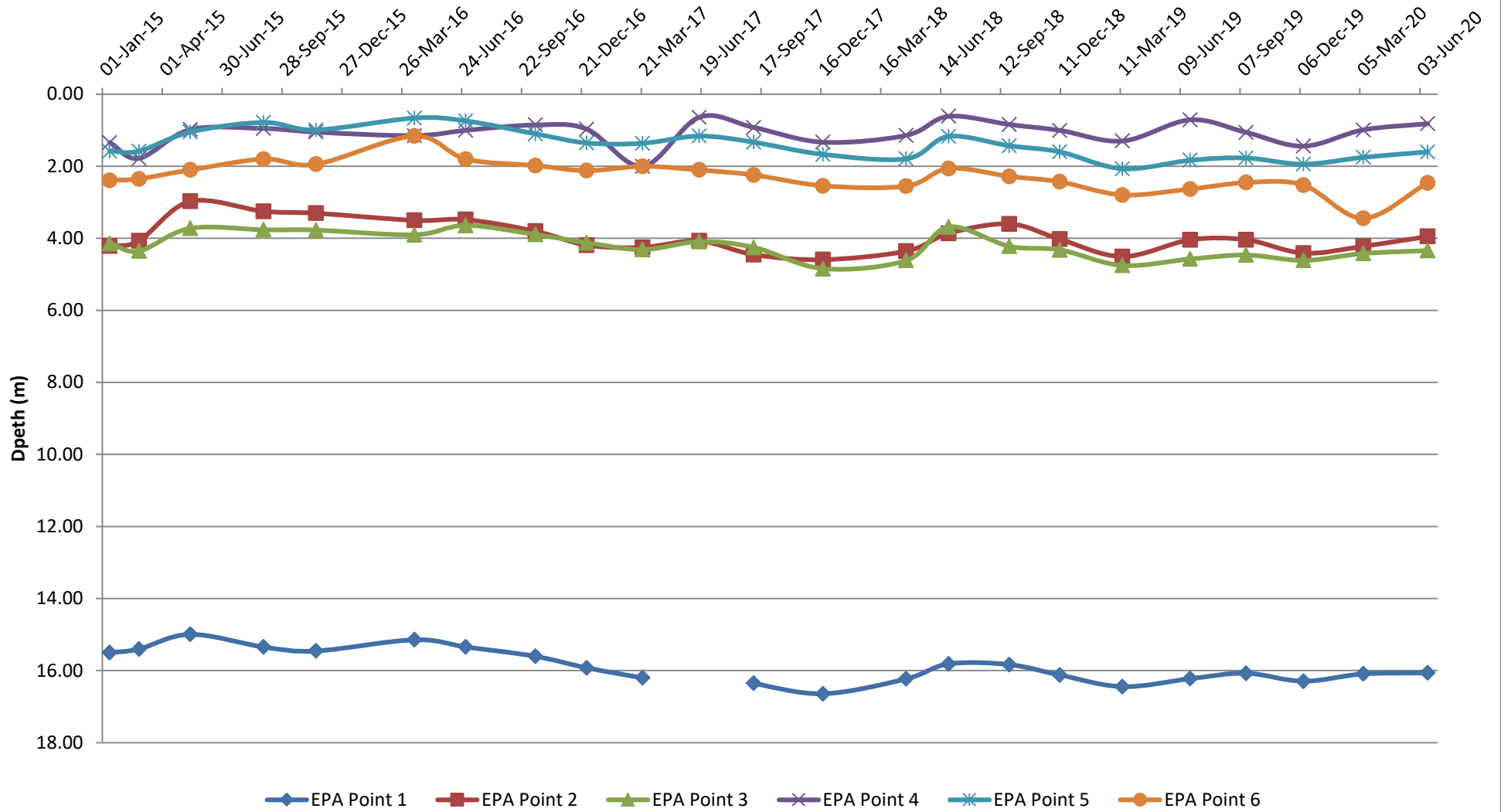
Quarterly Groundwater Monitoring

Sample Date	Depth - EPL (m)						Water Level (PA 08_0142 - SWMP Only)						Comment
	EPA Point 1	EPA Point 2	EPA Point 3	EPA Point 4	EPA Point 5	EPA Point 6	SP1	SP2	SP3	SP4	SP5	BL158	
4/10/2019	non-specified	non-specified	non-specified	non-specified	non-specified	non-specified	> 3.6	> 2.8	> 2.6	> 1.25	> 3.6	> 3.7	
12-Jan-15	15.50	4.21	4.14	1.34	1.58	2.39	2.00	2.19	2.07	0.41	2.57	1.77	
25-Feb-15	15.40	4.07	4.35	1.78	1.58	2.35	2.10	2.33	1.86	-0.03	2.57	1.81	
13-May-15	14.99	2.97	3.72	0.98	1.05	2.10	2.51	3.43	2.49	0.77	3.10	2.06	
31-Aug-15	15.34	3.25	3.76	0.95	0.78	1.80	2.16	3.15	2.45	0.80	3.37	2.36	
18-Nov-15	15.45	3.30	3.77	1.05	0.99	1.94	2.05	3.10	2.44	0.70	3.16	2.22	
14-Apr-16	15.14	3.50	3.90	1.15	0.66	1.16	2.36	2.90	2.31	0.60	3.49	3.00	
30-Jun-16	15.34	3.48	3.64	1.00	0.74	1.80	2.16	2.92	2.57	0.75	3.41	2.36	
13-Oct-16	15.60	3.80	3.89	0.85	1.10	1.98	1.90	2.60	2.32	0.90	3.05	2.18	
29-Dec-16	15.92	4.19	4.12	0.97	1.35	2.12	1.58	2.21	2.09	0.78	2.80	2.04	
23-Mar-17	16.20	4.25	4.31	2.00	1.36	2.00	1.30	2.15	1.90	-0.25	2.79	2.16	
16-Jun-17		4.07	4.09	0.64	1.16	2.10		2.33	2.12	1.11	2.99	2.06	Sampling error at SP1/EPA Point 1
06-Sep-17	16.35	4.45	4.25	0.92	1.33	2.24	1.15	1.95	1.96	0.83	2.82	1.92	
19-Dec-17	16.64	4.59	4.84	1.33	1.67	2.54	0.86	1.81	1.37	0.42	2.48	1.62	
23-Apr-18	16.23	4.36	4.61	1.14	1.79	2.55	1.28	2.05	1.60	0.61	2.36	1.61	
26-Jun-18	15.81	3.86	3.68	0.61	1.17	2.06	1.69	2.54	2.53	1.14	2.98	2.10	
25-Sep-18	15.83	3.60	4.22	0.84	1.43	2.28	1.67	2.80	1.99	0.91	2.72	1.88	Standpipe replaced in August 2018.
10-Dec-18	16.12	4.02	4.32	1.00	1.60	2.43	1.39	2.43	1.89	0.72	2.55	1.73	
14-Mar-19	16.44	4.50	4.75	1.30	2.07	2.80	1.06	1.95	1.46	0.42	2.08	1.36	SP4 Casing broken. Indicative water level based off previously surveyed standpipe height. SP1 & SP5 monitoring undertaken on 15/3/19 due to access restrictions on 14/3/2019.
24-Jun-19	16.22	4.04	4.57	0.71	1.83	2.63	1.29	2.41	1.64	1.01	2.32	1.53	SP4 Casing broken (repaired and broken again). Indicative water level based off previously surveyed standpipe height.
16-Sep-19	16.07	4.04	4.46	1.06	1.77	2.45	1.44	2.41	1.75	0.66	2.38	1.71	SP5 Monitoring undertaken on 17/9/19
11-Dec-19	16.29	4.41	4.61	1.44	1.94	2.52	1.22	2.04	1.60	0.28	2.21	1.64	
10-Mar-20	16.09	4.22	4.42	0.99	1.75	3.44	1.42	2.23	1.79	0.73	2.40	0.72	
15-Jun-20	16.06	3.95	4.34	0.82	1.60	2.46	1.45	2.51	1.87	0.91	2.54	1.70	SP4 well casing broken. SP3, SP5 and BL158 sampling conducted on 16/06/20.

Above nominated SWMP trigger level													
FY 19/20 Statistics	EPA Point 1	EPA Point 2	EPA Point 3	EPA Point 4	EPA Point 5	EPA Point 6	SP1	SP2	SP3	SP4	SP5	BL158	Comment
Count	4	4	4	4	4	4	4	4	4	4	4	4	
Min	16.06	3.95	4.34	0.82	1.60	2.45	1.22	2.04	1.60	0.28	2.21	0.72	
Average	16.13	4.15	4.46	1.08	1.77	2.72	1.38	2.30	1.75	0.64	2.38	1.44	
Max	16.29	4.41	4.61	1.44	1.94	3.44	1.45	2.51	1.87	0.91	2.54	1.71	

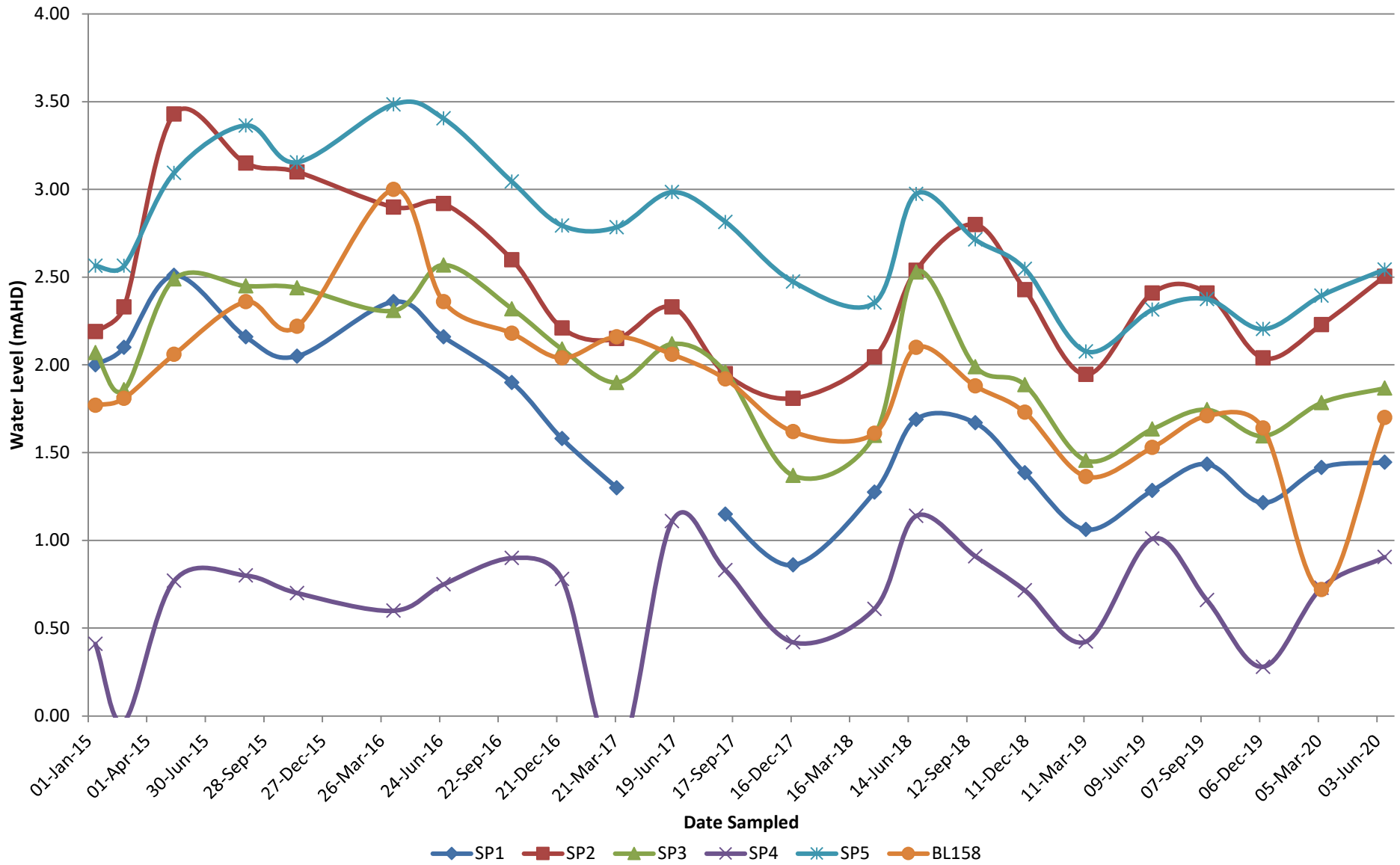
# Groundwater Depths (m)

Date Sampled



Note: No EPL Limit Specified

# Groundwater Levels (mAHD)



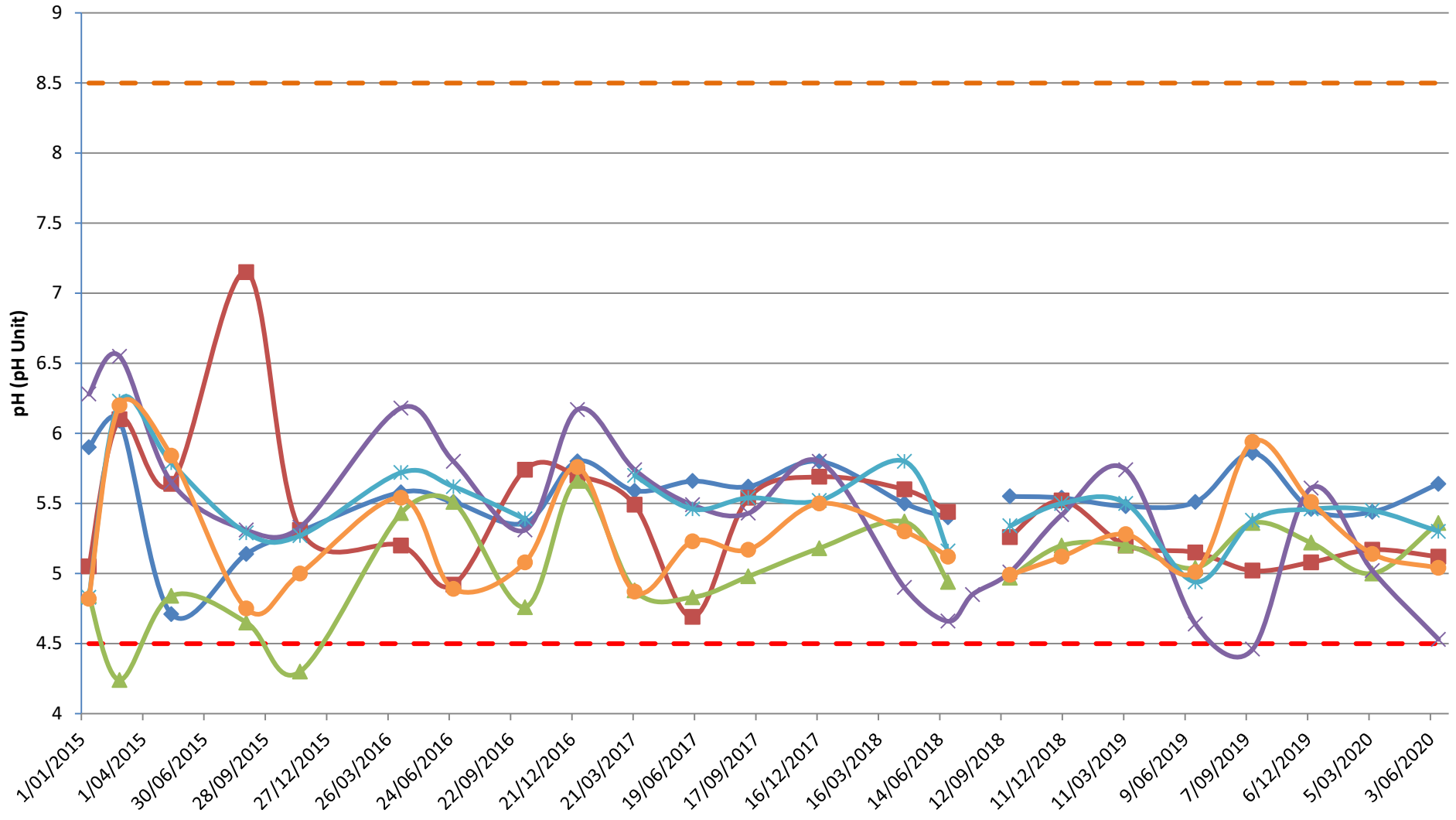
1646 - Macka's Sand

Quarterly Groundwater Monitoring

pH										
Sample Date	Lower SWMP Trigger	Upper SWMP Trigger	EPL Limit	EPA Point 1	EPA Point 2	EPA Point 3	EPA Point 4	EPA Point 5	EPA Point 6	Comment
				SP1	SP2	SP3	SP4	SP5	BL158	
12-Jan-15	4.5	8.5	non-specified	5.9	5.05	4.84	6.28	4.83	4.82	
26-Feb-15	4.5	8.5	non-specified	6.09	6.1	4.24	6.55	6.23	6.2	
13-May-15	4.5	8.5	non-specified	4.71	5.64	4.84	5.65	5.79	5.84	
31-Aug-15	4.5	8.5	non-specified	5.14	7.15	4.65	5.31	5.29	4.75	
18-Nov-15	4.5	8.5	non-specified	5.3	5.31	4.3	5.33	5.27	5	
14-Apr-16	4.5	8.5	non-specified	5.58	5.2	5.43	6.18	5.72	5.54	
30-Jun-16	4.5	8.5	non-specified	5.51	4.92	5.51	5.8	5.62	4.89	
13-Oct-16	4.5	8.5	non-specified	5.36	5.74	4.76	5.31	5.39	5.08	
29-Dec-16	4.5	8.5	non-specified	5.8	5.7	5.66	6.17	5.7	5.76	Sampling error at SP5
23-Mar-17	4.5	8.5	non-specified	5.59	5.49	4.88	5.74	5.7	4.87	
16-Jun-17	4.5	8.5	non-specified	5.66	4.69	4.83	5.49	5.46	5.23	
06-Sep-17	4.5	8.5	non-specified	5.62	5.54	4.98	5.43	5.54	5.17	
19-Dec-17	4.5	8.5	non-specified	5.80	5.69	5.18	5.80	5.52	5.50	
23-Apr-18	4.5	8.5	non-specified	5.50	5.60	5.37	4.90	5.80	5.30	
26-Jun-18	4.5	8.5	non-specified	5.40	5.44	4.94	4.66	5.16	5.12	
01-Aug-18	4.5	8.5	non-specified				4.85			Additional SP4 monitoring event due to standpipe replacement
25-Sep-18	4.5	8.5	non-specified	5.55	5.26	4.97	5.01	5.34	4.99	
10-Dec-18	4.5	8.5	non-specified	5.54	5.52	5.20	5.42	5.50	5.12	
14-Mar-19	4.5	8.5	non-specified	5.48	5.20	5.20	5.74	5.50	5.28	SP1 & SP5 monitoring undertaken on 15/3/19 due to access restrictions on 14/3/2019.
24-Jun-19	4.5	8.5	non-specified	5.51	5.15	5.04	4.64	4.94	5.01	
16-Sep-19	4.5	8.5	non-specified	5.86	5.02	5.36	4.46	5.38	5.94	SP5 Monitoring undertaken on 16/9/19
11-Dec-19	4.5	8.5	non-specified	5.46	5.08	5.22	5.61	5.46	5.51	
10-Mar-20	4.5	8.5	non-specified	5.44	5.17	5.00	5.02	5.45	5.14	
15-Jun-20	4.5	8.5	non-specified	5.64	5.12	5.36	4.53	5.3	5.04	SP3, SP5 and BL158 sampling conducted on 16/06/20.
Above nominated SWMP trigger level										

FY 19/20 Statistics	EPA Point 1	EPA Point 2	EPA Point 3	EPA Point 4	EPA Point 5	EPA Point 6
Count	4	4	4	4	4	4
Min	5.44	5.02	5.00	4.46	5.30	5.04
Average	5.60	5.10	5.24	4.91	5.40	5.41
Max	5.86	5.17	5.36	5.61	5.46	5.94

# Groundwater - pH



Note: No EPL Limit Specified

- - - Lower SWMP Trigger
- - - Upper SWMP Trigger
- ◆ EPA Point 1
- EPA Point 2
- ▲ EPA Point 3
- × EPA Point 4
- \* EPA Point 5
- EPA Point 6

## 1646 - Macka's Sand

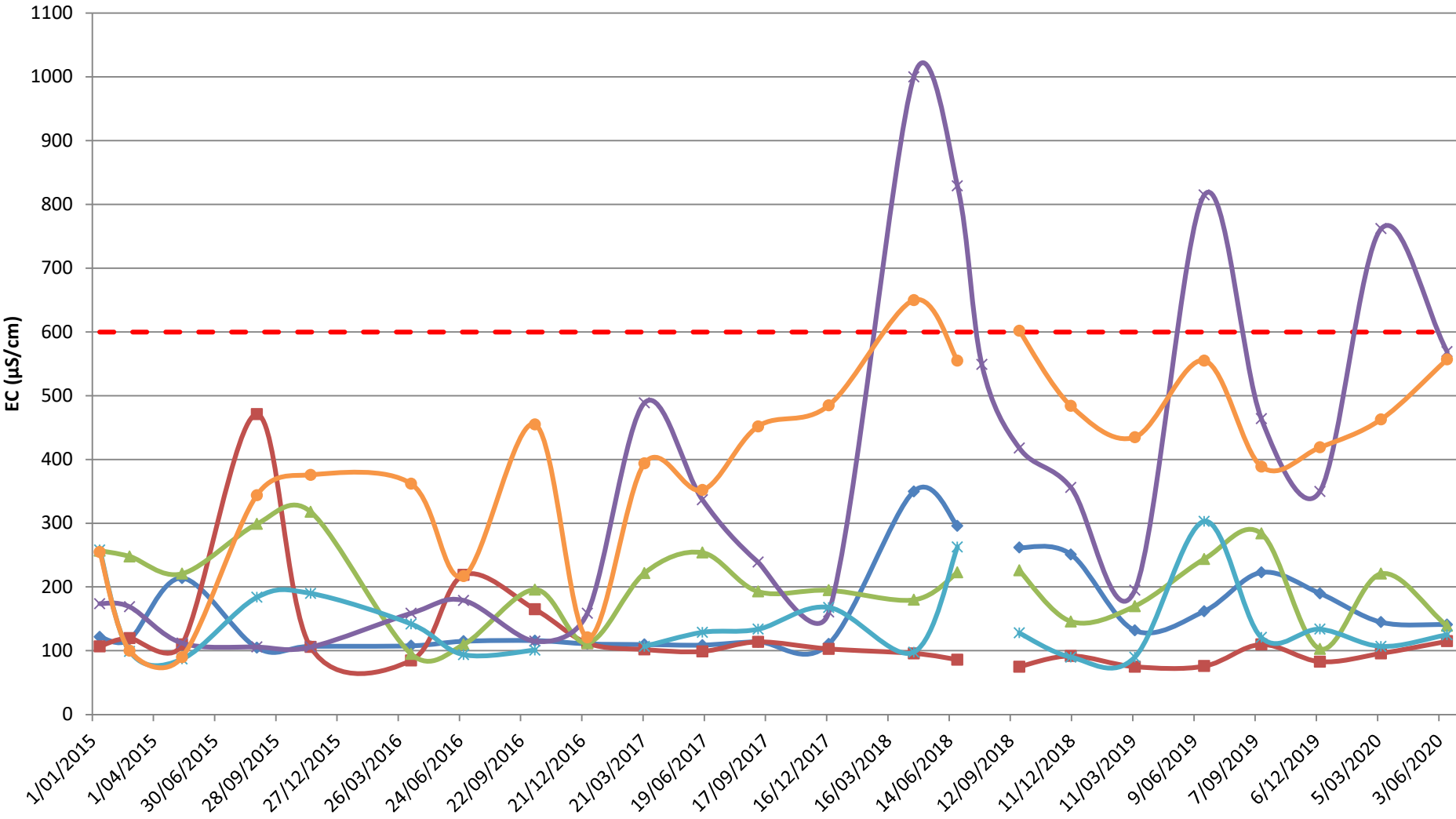
### Quarterly Groundwater Monitoring

Electrical Conductivity (µS/cm)									
Sample Date	SWMP Trigger	EPL Limit	EPA Point 1	EPA Point 2	EPA Point 3	EPA Point 4	EPA Point 5	EPA Point 6	Comment
			SP1	SP2	SP3	SP4	SP5	BL158	
12-Jan-15	600	non-specified	122	107	257	174	258	255	
25-Feb-15	600	non-specified	118	120	248	169	99	100	
13-May-15	600	non-specified	214	110	221	112	87	90	
31-Aug-15	600	non-specified	105	471	299	106	184	344	
18-Nov-15	600	non-specified	107	106	318	106	190	376	
14-Apr-16	600	non-specified	108	85	95	159	142	362	
30-Jun-16	600	non-specified	115	219	110	179	94	217	
13-Oct-16	600	non-specified	116	165	196	115	101	455	
29-Dec-16	600	non-specified	111	112	112	159		121	Sampling Error at SP5
23-Mar-17	600	non-specified	110	102	222	489	107	394	
16-Jun-17	600	non-specified	109	99	254	337	129	352	
06-Sep-17	600	non-specified	114	114	193	239	134	452	
19-Dec-17	600	non-specified	111	103	195	161	168	485	
23-Apr-18	600	non-specified	350	96	180	1000	98	650	
26-Jun-18	600	non-specified	296	86	223	829	263	555	
01-Aug-18	600	non-specified				549			Additional SP4 monitoring event due to standpipe replacement
25-Sep-18	600	non-specified	262	75	226	418	128	602	
10-Dec-18	600	non-specified	251	92	146	356	90	484	
14-Mar-19	600	non-specified	132	75	170	195	90	435	SP1 & SP5 monitoring undertaken on 15/3/19 due to access restrictions on 14/3/2019.
24-Jun-19	600	non-specified	162	76	244	815	303	555	
16-Sep-19	600	non-specified	223	110	284	464	121	389	SP5 monitoring undertaken on 17/9/19
11-Dec-19	600	non-specified	190	83	103	350	134	419	
10-Mar-20	600	non-specified	145	96	221	762	107	463	
15-Jun-20	600	non-specified	141	115	139	569	125	557	SP3, SP5 and BL158 sampling conducted on 16/06/20.

Above nominated SWMP trigger level

FY 19/20 Statistics	EPA Point 1	EPA Point 2	EPA Point 3	EPA Point 4	EPA Point 5	EPA Point 6
Count	4	4	4	4	4	4
Min	141	83	103	350	107	389
Average	175	101	187	536	122	457
Max	223	115	284	762	134	557

# Groundwater - Electrical Conductivity (EC)



Note: No EPL Limit Specified

- - - SWMP Trigger
- EPA Point 1
- EPA Point 2
- ▲- EPA Point 3
- ×- EPA Point 4
- ✱- EPA Point 5
- EPA Point 6



## 1646 - Macka's Sand

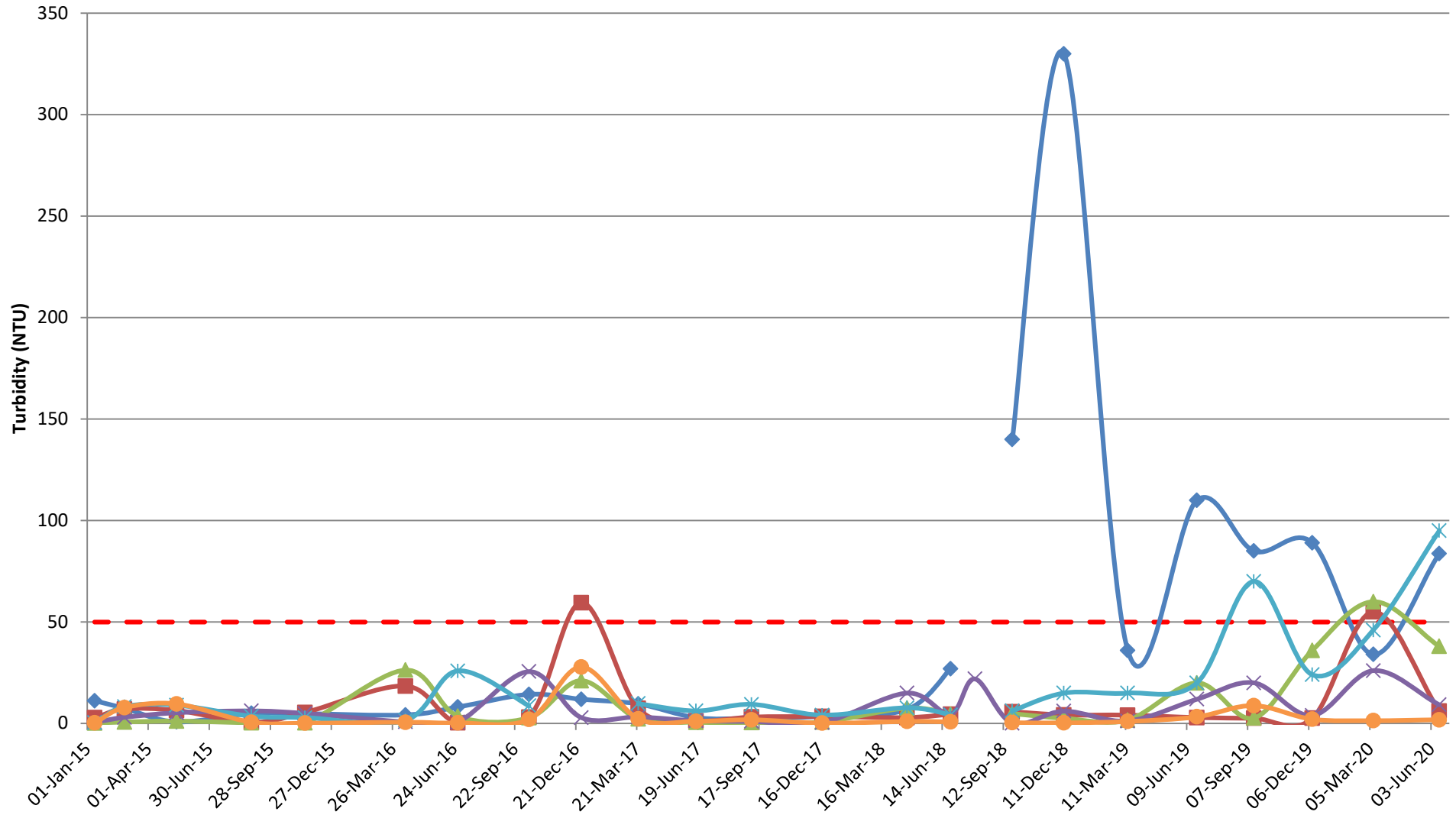
### Quarterly Groundwater Monitoring

Sample Date	SWMP Trigger	EPL Limit	Turbidity (NTU)						Comment
			EPA Point 1	EPA Point 2	EPA Point 3	EPA Point 4	EPA Point 5	EPA Point 6	
			SP1	SP2	SP3	SP4	SP5	BL158	
12-Jan-15	50	non-specified	11.2	2.8	0.2	0.6	0.3	0.3	
25-Feb-15	50	non-specified	7.5	7.1	0.7	3.0	8.3	7.8	
13-May-15	50	non-specified	0.8	6.4	1.2	5.3	9.0	9.6	
31-Aug-15	50	non-specified	5.0	0.6	0.3	6.2	3.6	0.6	
18-Nov-15	50	non-specified	4.8	5.4	0.3	4.9	2.9	0.2	
14-Apr-16	50	non-specified	4.2	18.4	26.3	0.8	1.5	0.6	
30-Jun-16	50	non-specified	8.1	0.3	3.6	0.7	25.9	0.3	
13-Oct-16	50	non-specified	14.3	3.1	2.8	25.6	8.7	2.0	
29-Dec-16	50	non-specified	11.9	59.5	21.1	2.9		27.8	Sampling Error at SP5
23-Mar-17	50	non-specified	9.6	7.4	2.2	3.2	9.8	2.3	
16-Jun-17	50	non-specified	2.9	1.3	0.6	1.3	6.2	1.1	
06-Sep-17	50	non-specified	2.5	3.2	0.5	1.0	9.4	1.8	
19-Dec-17	50	non-specified	3.5	3.4	0.7	0.4	4.1	0.2	
23-Apr-18	50	non-specified	6.9	2.9	7.6	15.0	7.7	1.0	
26-Jun-18	50	non-specified	27.0	4.6	4.6	4.6	4.2	0.8	
01-Aug-18	50	non-specified				22.0			Additional SP4 monitoring event due to standpipe replacement
25-Sep-18	50	non-specified	140.0	5.8	4.8	0.1	6.2	0.4	
10-Dec-18	50	non-specified	330.0	4.2	2.6	6.1	15.0	0.3	
14-Mar-19	50	non-specified	36.0	4.1	1.7	1.2	15.0	1.0	SP1 & SP5 monitoring undertaken on 15/3/19 due to access restrictions on 14/3/2019.
24-Jun-19	50	non-specified	110.0	2.9	20.0	12.0	20.0	3.3	
16-Sep-19	50	non-specified	85.0	2.6	2.7	20.0	70.0	8.8	SP5 monitoring undertaken on 17/9/19
11-Dec-19	50	non-specified	89.0	2.6	36.0	3.9	24.0	2.1	
10-Mar-20	50	non-specified	34.0	55.0	60.0	26.0	46.0	1.4	
15-Jun-20	50	non-specified	83.7	6.1	38	9.2	95	1.8	SP3, SP5 and BL158 sampling conducted on 16/06/20.

Above nominated SWMP trigger level

FY 19/20 Statistics	EPA Point 1	EPA Point 2	EPA Point 3	EPA Point 4	EPA Point 5	EPA Point 6
Count	4	4	4	4	4	4
Min	34.0	2.6	2.7	3.9	24.0	1.4
Average	72.9	16.6	34.2	14.8	58.8	3.5
Max	89.0	55.0	60.0	26.0	95.0	8.8

# Groundwater - Turbidity (NTU)



Note: No EPL Limit Specified

- SWMP Trigger
- EPA Point 1
- EPA Point 2
- EPA Point 3
- EPA Point 4
- EPA Point 5
- EPA Point 6

# 1646 - Macka's Sand

## Quarterly Groundwater Monitoring

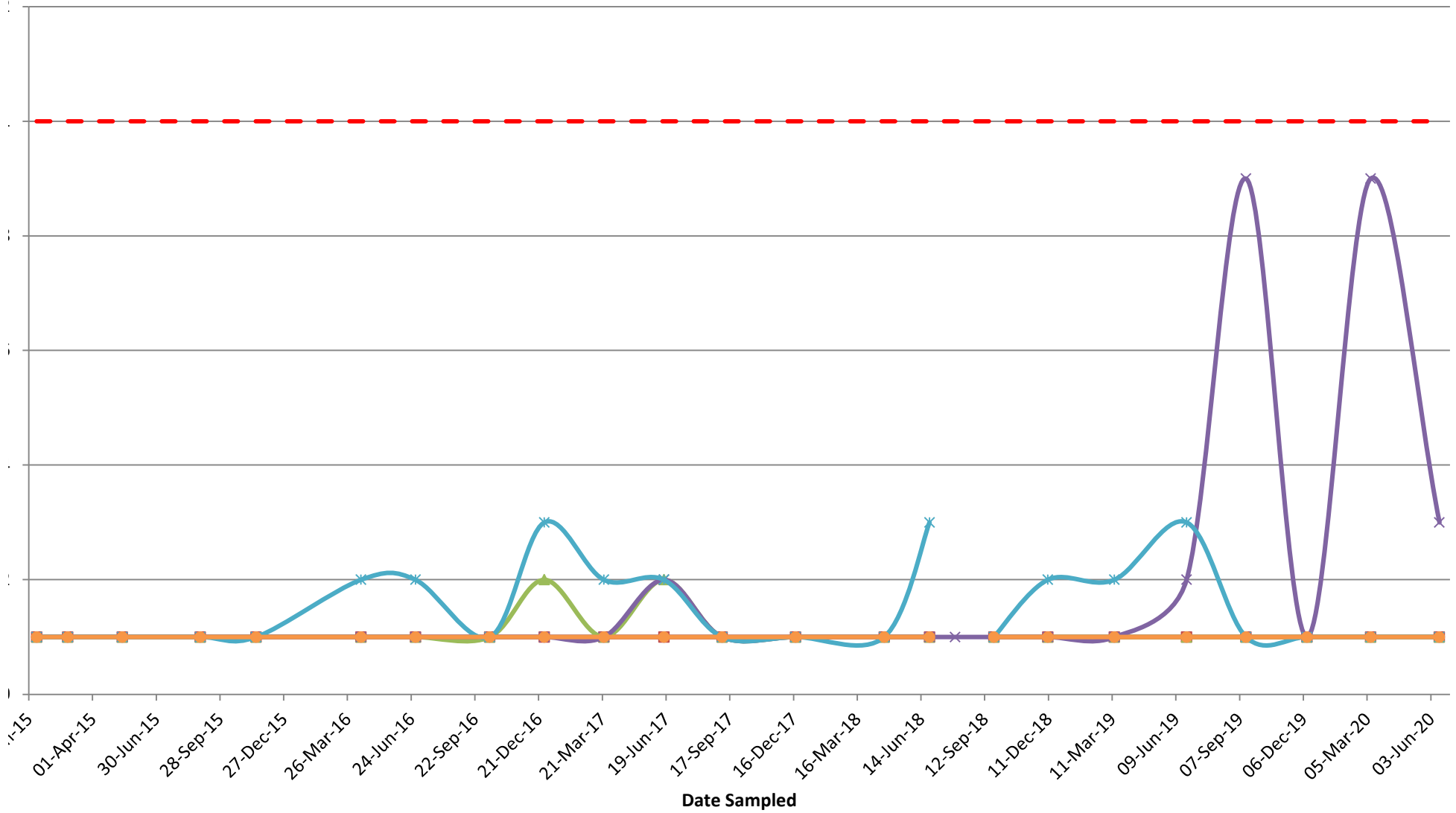
Sample Date	SWMP Trigger	EPL Limit	Arsenic (mg/L)						Comment
			EPA Point 1	EPA Point 2	EPA Point 3	EPA Point 4	EPA Point 5	EPA Point 6	
			SP1	SP2	SP3	SP4	SP5	BL158	
12-Jan-15	0.01	non-specified	0.001	0.001	0.001	0.001	0.001	0.001	
25-Feb-15	0.01	non-specified	0.001	0.001	0.001	0.001	0.001	0.001	
13-May-15	0.01	non-specified	0.001	0.001	0.001	0.001	0.001	0.001	
31-Aug-15	0.01	non-specified	0.001	0.001	0.001	0.001	0.001	0.001	
18-Nov-15	0.01	non-specified	0.001	0.001	0.001	0.001	0.001	0.001	
14-Apr-16	0.01	non-specified	0.001	0.001	0.001	0.001	0.002	0.001	
30-Jun-16	0.01	non-specified	0.001	0.001	0.001	0.001	0.002	0.001	
13-Oct-16	0.01	non-specified	0.001	0.001	0.001	0.001	0.001	0.001	
29-Dec-16	0.01	non-specified	0.001	0.001	0.002	0.001	0.003	0.001	
23-Mar-17	0.01	non-specified	0.001	0.001	0.001	0.001	0.002	0.001	
16-Jun-17	0.01	non-specified	0.001	0.001	0.002	0.002	0.002	0.001	
06-Sep-17	0.01	non-specified	0.001	0.001	0.001	0.001	0.001	0.001	
19-Dec-17	0.01	non-specified	0.001	0.001	0.001	0.001	0.001	0.001	
23-Apr-18	0.01	non-specified	0.001	0.001	0.001	0.001	0.001	0.001	
26-Jun-18	0.01	non-specified	0.001	0.001	0.001	0.001	0.003	0.001	
01-Aug-18	0.01	non-specified				0.001			Additional SP4 monitoring event due to standpipe replacement
25-Sep-18	0.01	non-specified	0.001	0.001	0.001	0.001	0.001	0.001	
10-Dec-18	0.01	non-specified	0.001	0.001	0.001	0.001	0.002	0.001	
14-Mar-19	0.01	non-specified	0.001	0.001	0.001	0.001	0.002	0.001	SP1 & SP5 monitoring undertaken on 15/3/19 due to access restrictions on 14/3/2019.
24-Jun-19	0.01	non-specified	0.001	0.001	0.001	0.002	0.003	0.001	
16-Sep-19	0.01	non-specified	0.001	0.001	0.001	0.009	0.001	0.001	SP5 Monitoring undertaken on 16/9/19
11-Dec-19	0.01	non-specified	0.001	0.001	0.001	0.001	0.001	0.001	
10-Mar-20	0.01	non-specified	0.001	0.001	0.001	0.009	0.001	0.001	
15-Jun-20	0.01	non-specified	0.001	0.001	0.001	0.003	0.001	0.001	SP3, SP5 and BL158 sampling conducted on 16/06/20.

Note: Shaded cells indicate values less than 0.001 (i.e. limit of detection), '<' removed to populate graph

Above nominated SWMP trigger level

FY 19/20 Statistics	EPA Point 1	EPA Point 2	EPA Point 3	EPA Point 4	EPA Point 5	EPA Point 6
Count	4	4	4	4	4	4
Min	0.001	0.001	0.001	0.001	0.001	0.001
Average	0.001	0.001	0.001	0.006	0.001	0.001
Max	0.001	0.001	0.001	0.009	0.001	0.001

# Groundwater - Arsenic (mg/L)



EPL Limit Specified

- SWMP Trigger
- EPA Point 1
- EPA Point 2
- EPA Point 3
- EPA Point 4
- EPA Point 5
- EPA Point 6

# 1646 - Macka's Sand

## Quarterly Groundwater Monitoring

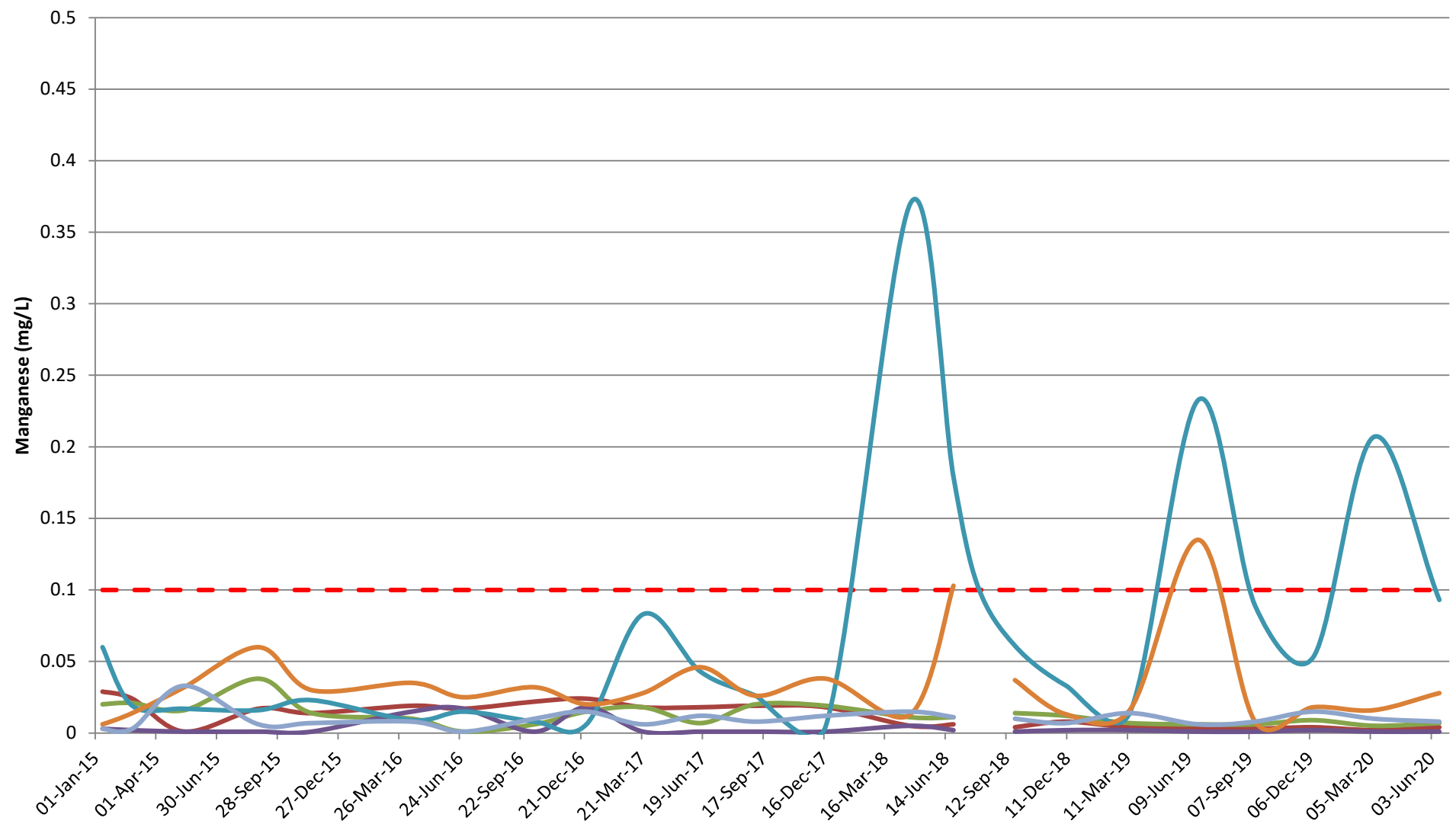
Sample Date	SWMP Trigger	EPL Limit	Manganese (mg/L)						Comment
			EPA Point 1	EPA Point 2	EPA Point 3	EPA Point 4	EPA Point 5	EPA Point 6	
				SP2	SP3	SP4	SP5	BL158	
12-Jan-15	0.1	non-specified	0.029	0.020	0.003	0.060	0.006	0.003	
25-Feb-15	0.1	non-specified	0.024	0.021	0.002	0.019	0.014	0.003	
13-May-15	0.1	non-specified	0.001	0.016	0.001	0.017	0.032	0.033	
31-Aug-15	0.1	non-specified	0.017	0.038	0.001	0.016	0.060	0.006	
18-Nov-15	0.1	non-specified	0.014	0.014	0.001	0.023	0.030	0.007	
14-Apr-16	0.1	non-specified	0.019	0.010	0.015	0.009	0.035	0.008	
30-Jun-16	0.1	non-specified	0.017	0.001	0.017	0.015	0.025	0.001	
13-Oct-16	0.1	non-specified	0.022	0.006	0.001	0.008	0.032	0.010	
29-Dec-16	0.1	non-specified	0.024	0.015	0.018	0.006	0.020	0.015	
23-Mar-17	0.1	non-specified	0.018	0.018	0.001	0.083	0.028	0.006	
16-Jun-17	0.1	non-specified	0.018	0.007	0.001	0.043	0.046	0.012	
06-Sep-17	0.1	non-specified	0.019	0.020	0.001	0.026	0.026	0.008	
19-Dec-17	0.1	non-specified	0.018	0.019	0.001	0.005	0.038	0.012	
23-Apr-18	0.1	non-specified	0.005	0.011	0.005	0.37	0.013	0.015	
26-Jun-18	0.1	non-specified	0.006	0.011	0.002	0.179	0.103	0.011	
01-Aug-18	0.1	non-specified				0.103			Additional SP4 monitoring event due to standpipe replacement
25-Sep-18	0.1	non-specified	0.004	0.014	0.001	0.061	0.037	0.010	
10-Dec-18	0.1	non-specified	0.008	0.012	0.002	0.033	0.013	0.007	
14-Mar-19	0.1	non-specified	0.004	0.007	0.002	0.014	0.016	0.014	SP1 & SP5 monitoring undertaken on 15/3/19 due to access restrictions on 14/3/2019.
24-Jun-19	0.1	non-specified	0.004	0.006	0.001	0.233	0.135	0.006	
16-Sep-19	0.1	non-specified	0.003	0.006	0.001	0.089	0.008	0.008	
11-Dec-19	0.1	non-specified	0.004	0.009	0.002	0.053	0.018	0.015	
10-Mar-20	0.1	non-specified	0.002	0.005	0.001	0.207	0.016	0.010	
15-Jun-20	0.1	non-specified	0.004	0.007	0.001	0.093	0.028	0.008	SP3, SP5 and BL158 sampling conducted on 16/06/20.

Note: Shaded cells indicate values less than 0.001 (i.e. limit of detection). '<' removed to populate graph

Above nominated SWMP trigger level

FY 19/20 Statistics	EPA Point 1	EPA Point 2	EPA Point 3	EPA Point 4	EPA Point 5	EPA Point 6
Count	4	4	4	4	4	4
Min	0.002	0.005	0.001	0.053	0.008	0.008
Average	0.003	0.007	0.001	0.111	0.018	0.010
Max	0.004	0.009	0.002	0.207	0.028	0.015

# Groundwater - Manganese (mg/L)



Note: No EPL Limit Specified

- SWMP Trigger
- EPA Point 1
- EPA Point 2
- EPA Point 3
- EPA Point 4
- EPA Point 5
- EPA Point 6

## 1646 - Macka's Sand

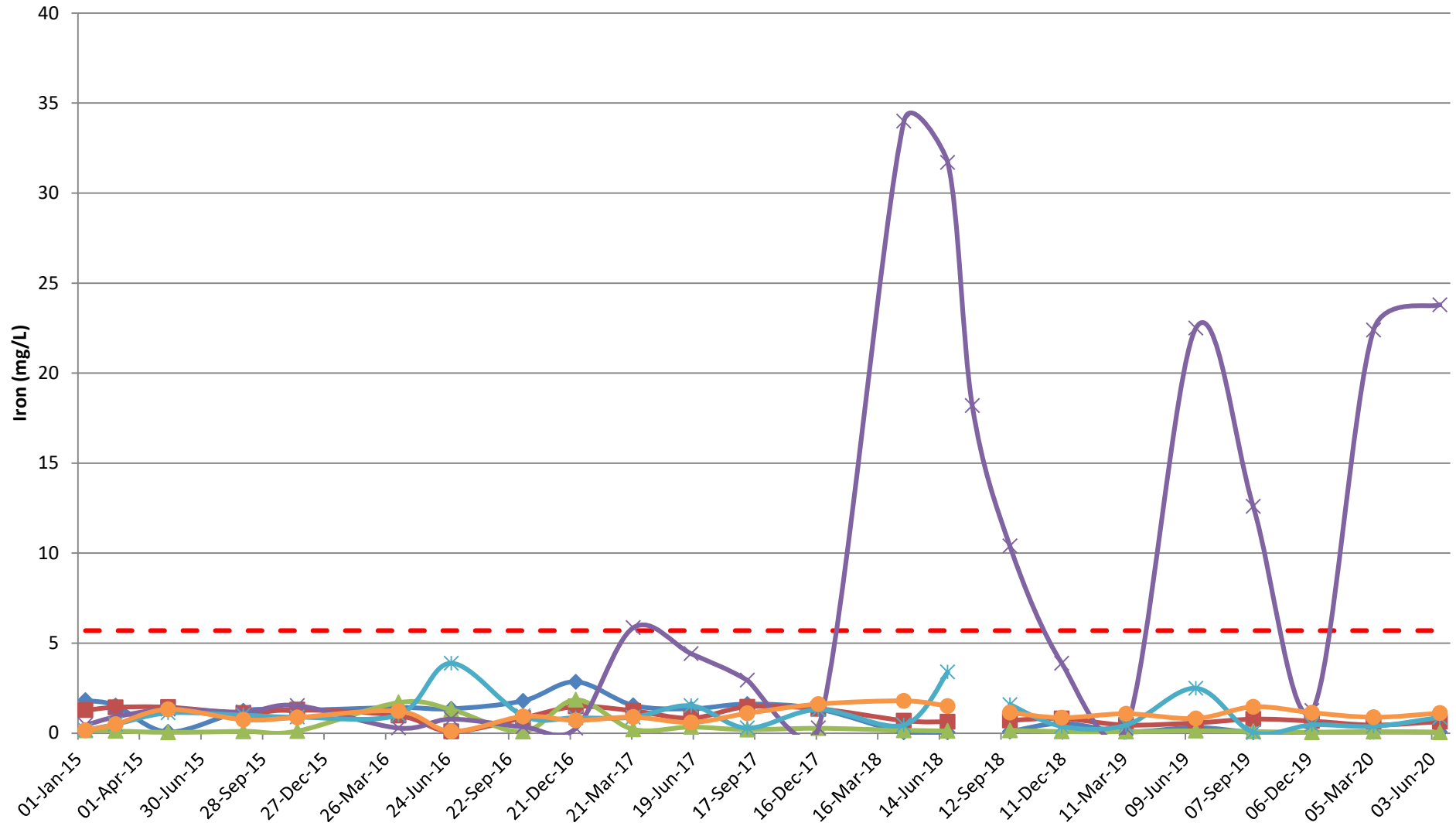
### Quarterly Groundwater Monitoring

Sample Date	SWMP Trigger	EPL Limit	Iron (mg/L)						Comment
			EPA Point 1	EPA Point 2	EPA Point 3	EPA Point 4	EPA Point 5	EPA Point 6	
			SP1	SP2	SP3	SP4	SP5	BL158	
12-Jan-15	5.7	non-specified	1.83	1.28	0.16	0.46	0.17	0.16	
25-Feb-15	5.7	non-specified	1.54	1.44	0.13	0.91	0.50	0.50	
13-May-15	5.7	non-specified	0.07	1.45	0.05	1.34	1.13	1.33	
31-Aug-15	5.7	non-specified	1.25	1.12	0.11	1.18	1.01	0.75	
18-Nov-15	5.7	non-specified	1.27	1.31	0.12	1.54	0.90	0.88	
14-Apr-16	5.7	non-specified	1.43	0.98	1.71	0.29	1.03	1.23	
30-Jun-16	5.7	non-specified	1.36	0.10	1.32	0.79	3.89	0.11	
13-Oct-16	5.7	non-specified	1.80	0.85	0.09	0.36	0.97	0.93	
29-Dec-16	5.7	non-specified	2.86	1.49	1.86	0.28	0.86	0.71	
23-Mar-17	5.7	non-specified	1.55	1.25	0.22	5.86	0.89	0.90	
16-Jun-17	5.7	non-specified	1.36	0.84	0.35	4.42	1.53	0.60	
06-Sep-17	5.7	non-specified	1.62	1.47	0.20	2.95	0.29	1.11	
19-Dec-17	5.7	non-specified	1.35	1.36	0.28	0.29	1.32	1.62	
23-Apr-18	5.7	non-specified	0.05	0.70	0.16	34	0.46	1.80	
26-Jun-18	5.7	non-specified	0.05	0.64	0.13	31.7	3.40	1.51	
01-Aug-18	5.7	non-specified				18.2			Additional SP4 monitoring event due to standpipe replacement
25-Sep-18	5.7	non-specified	0.09	0.71	0.16	10.4	1.59	1.15	
10-Dec-18	5.7	non-specified	0.55	0.82	0.10	3.88	0.38	0.86	
14-Mar-19	5.7	non-specified	0.08	0.46	0.09	0.27	0.46	1.08	SP1 & SP5 monitoring undertaken on 15/3/19 due to access restrictions on 14/3/2019.
24-Jun-19	5.7	non-specified	0.32	0.58	0.14	22.5	2.50	0.82	
16-Sep-19	5.7	non-specified	0.05	0.79	0.10	12.6	0.05	1.47	
11-Dec-19	5.7	non-specified	0.05	0.68	0.05	1.26	0.47	1.14	SP1 and SP3 recorded as <0.05. '<' removed to populate graph
10-Mar-20	5.7	non-specified	0.07	0.46	0.09	22.4	0.39	0.89	
15-Jun-20	5.7	non-specified	0.06	0.64	0.05	23.8	0.88	1.12	SP3, SP5 and BL158 sampling conducted on 16/06/20.

Above nominated SWMP trigger level

FY 19/20 Statistics	EPA Point 1	EPA Point 2	EPA Point 3	EPA Point 4	EPA Point 5	EPA Point 6
Count	4	4	4	4	4	4
Min	0.05	0.46	0.05	1.26	0.05	0.89
Average	0.06	0.64	0.07	15.02	0.45	1.16
Max	0.07	0.79	0.10	23.80	0.88	1.47

# Groundwater - Iron (mg/L)



Note: No EPL Limit Specified

- SWMP Trigger
- EPA Point 1
- EPA Point 2
- EPA Point 3
- EPA Point 4
- EPA Point 5
- EPA Point 6